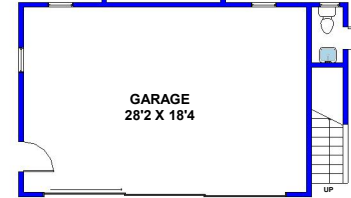
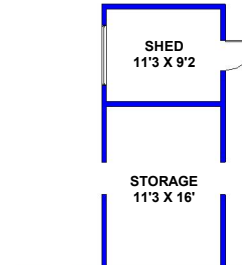
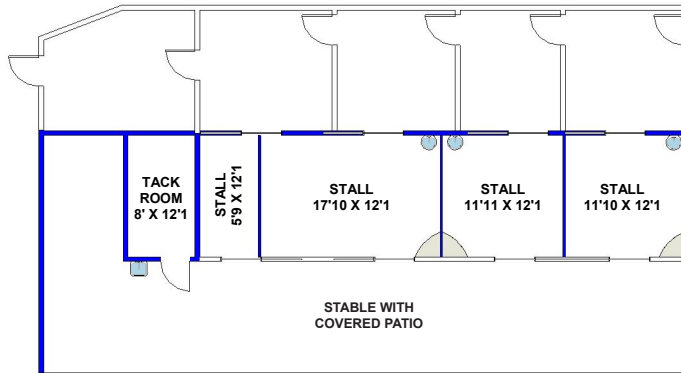


421, 425 and 461 E Las Flores Dr Altadena

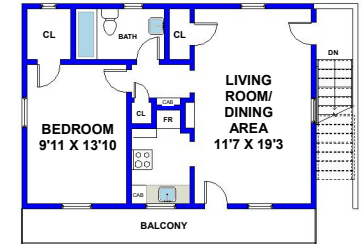
Provided courtesy of:



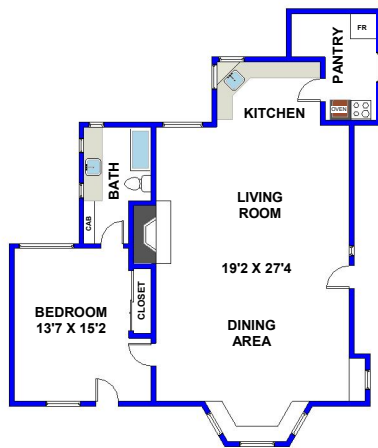
Judy Rubin
WHEN RESULTS COUNT
 626-688-3208
 Judy@JudyRubin.com
 CalBRE 00978364



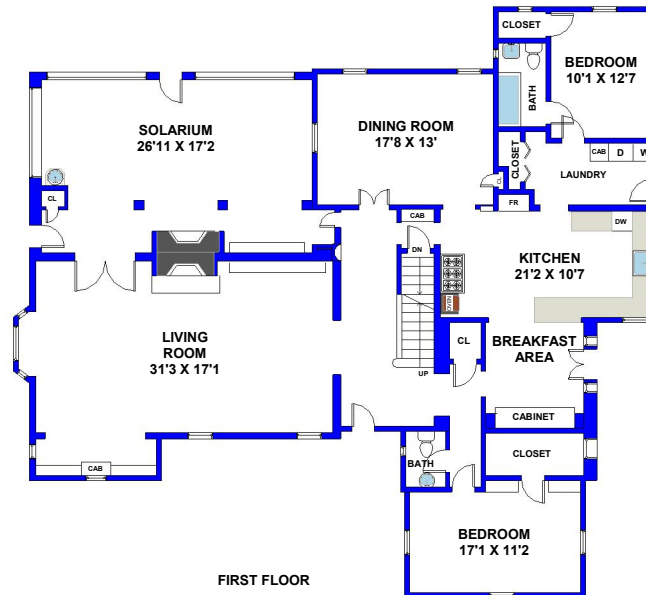
FIRST FLOOR



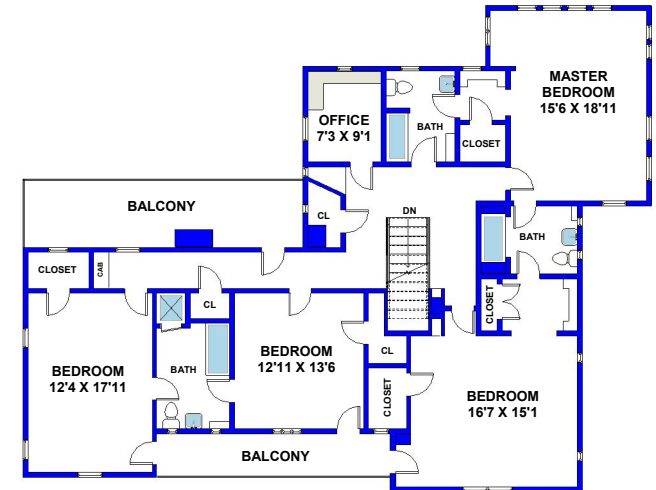
APARTMENT OVER GARAGE



GUEST HOUSE



FIRST FLOOR



SECOND FLOOR